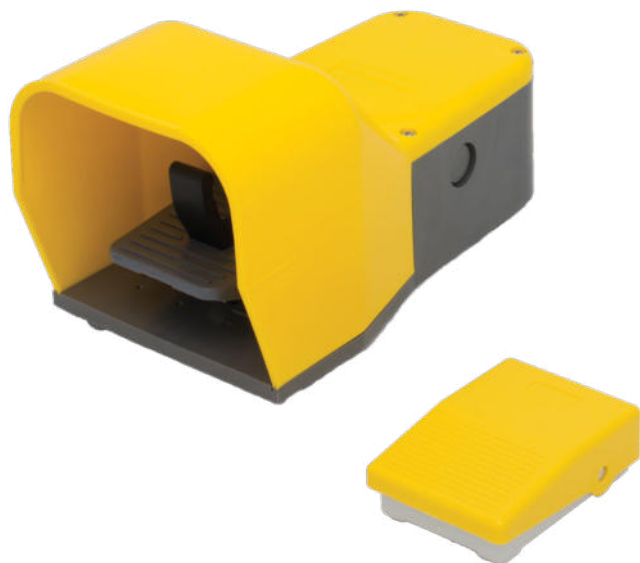


OMICRON

Footswitch



Footswitch for auxiliary control of machinery such as shearing, bending, wrapping machines, lathes, riveters and machine tools.

FEATURES

- Positive opening NC contacts for safety functions (not available for mini-footswitch configurations).
- Mechanical life of switches: up to max. 30 million operations.
- IP protection degree: footswitch Omicron is classified IP40 (mini-footswitch configuration) and IP65.
- Extreme temperature resistance: from -25°C to +70°C.
- Salt mist resistant.
- Base, cover and pedal made of shock resistant ABS material or of self-extinguishing polycarbonate/ABS-V0, or cover made of die-cast aluminium and base and pedal made of self-extinguishing polycarbonate/ABS-V0.
- Materials and components are shock and wear resistant.

OPTIONS

- Available in different configurations featuring various operation modes, cover color (grey, yellow or red) and switches.
- Available in five different lever operation modes: with free movement, with lever locked in neutral position or latched in low position, with free movement featuring two-stage actuating force, and with lever locked in neutral position with two-stage actuating force.
- Single or double footswitches and mini-footswitches available.
- 1 or 2 switches with 1NO+1NC slow or snap action contacts.

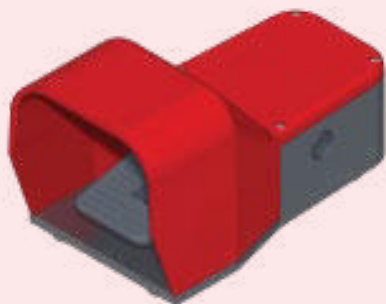
CERTIFICATIONS

- CE and UL marking (pending).

Fill in the "request form" for accurate product configuration.

POSSIBLE ASSEMBLIES




Omicron footswitch with red aluminium cover



Omicron mini-footswitch with grey cover





CERTIFICATIONS

Conformity to CE Standards	EN 60947-1 Low-voltage switchgear and controlgear
	EN 60947-5-1 Low-voltage switchgear and controlgear - Control circuit devices and switching elements - Electromechanical control circuit devices
	EN 60529 Degrees of protection provided by enclosures
	IEC 61058-1 Switches for appliances - Part 1: General requirements (for mini-footswitch)
	IEC 60068-2-78 Environmental Testing - Part 2-78: Tests - Test Cab: Damp heat, steady state (for footswitch with cover)
	IEC 60068-2-11 Environmental Testing - Part 2: Tests - Test Ka: Salt Mist (for footswitch with cover)
Markings and homologations	IEC 60068-2-27 Environmental Testing - Part 2: Tests - Test Ea & guidance: Shock (for footswitch with cover)
	Mini-footswitch 
	Footswitch with cover   (pending)

GENERAL TECHNICAL SPECIFICATIONS

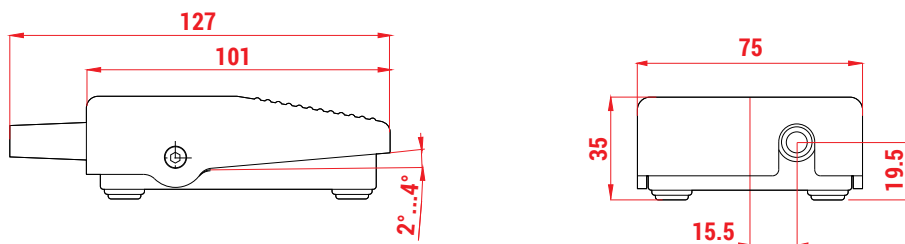
Footswitch type	Mini-footswitch	Footswitch with cover
Ambient temperature	Storage -30°C/+80°C Operational -25°C/+70°C	
Climatic resistance	-	Saline fog
Shock resistance	-	50g (1/2 sinusoidal shock for 11 ms) no change in contact position
IP protection degree	IP 40	IP 65
Operating torque	1.2 Nm	0.25 Nm
Operating angle	from 2° to 4°	15°
Cable entry	Cable clamp Ø 6, 8.5 max.	Cable clamp M20

ELECTRICAL SPECIFICATIONS

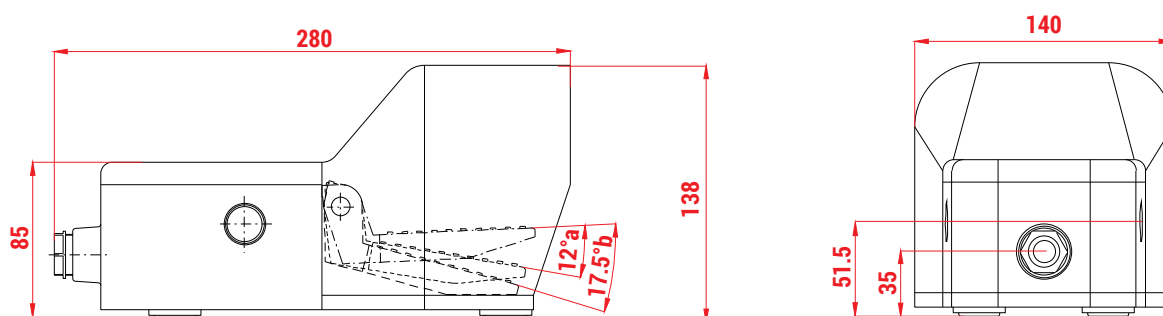
Footswitch type	Mini-footswitch	Footswitch with cover
Utilisation category	-	AC15 - DC13
Rated operational current	3 A / 250 Vac	A600 (according to UL508 and CSA C22-2 n.14)
	0.06 A / 230 Vdc	Q600 (according to UL508 and CSA C22-2 n.14)
	-	10 A / 24 Vac / AC15
	-	6 A / 240 Vac / AC15
	-	4 A / 400 Vac / AC15
	-	6 A / 24 Vdc / DC13
Rated insulation voltage	250 V	690 V degree of pollution 3
	1 kV	6 kV
Rated voltage impulse	1 kV	6 kV
Conventional free air thermal current $\theta < 40^{\circ}\text{C}$	15 A	10 A
Short-circuit protection $U_e < 500 \text{ Vac}$ - fuse type gG (gl)	10 A	10 A
Contact resistance	30 m Ω	25 m Ω
Mechanical life	10x10 ⁶ operations	30x10 ⁶ operations
Connections	Screws M3 x 0.5 (Philips head no. 1 and washer)	Screws with cable clamp M3.5 (+,-) pozidriv 2
Wires	-	1 o 2 x 0.75 ... 2.5 mm ²
Switch type	Change-over	Snap action
	-	Slow action
Contacts	1NO / 1NC	1NO+ 1NC (All NC contacts are of the positive opening operation type \ominus)
Scheme		

OVERALL DIMENSIONS (mm)

Omicron mini-footswitch

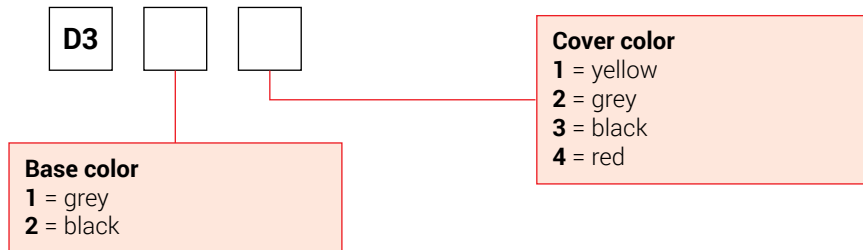


Omicron footswitch with cover



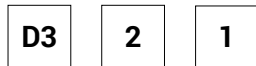
OMICRON - REQUEST FORM FOR FOOTSWITCH

Omicron mini-footswitch

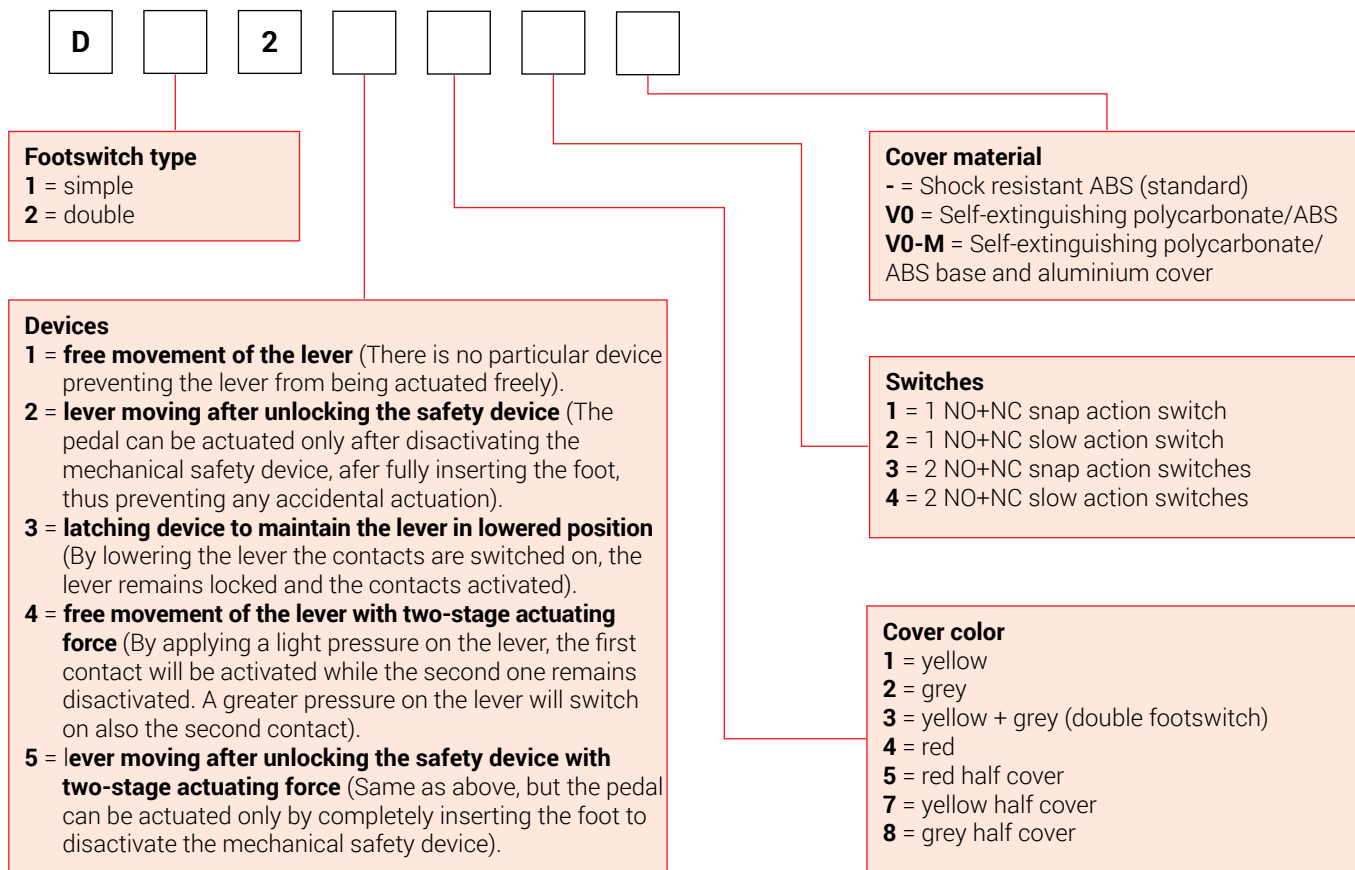


Instructions

Write into the boxes the numbers corresponding to the characteristics required and obtain the footswitch code (see example).



Omicron footswitch with cover



Instructions

Write into the boxes the numbers corresponding to the characteristics required and obtain the footswitch code (see example).

